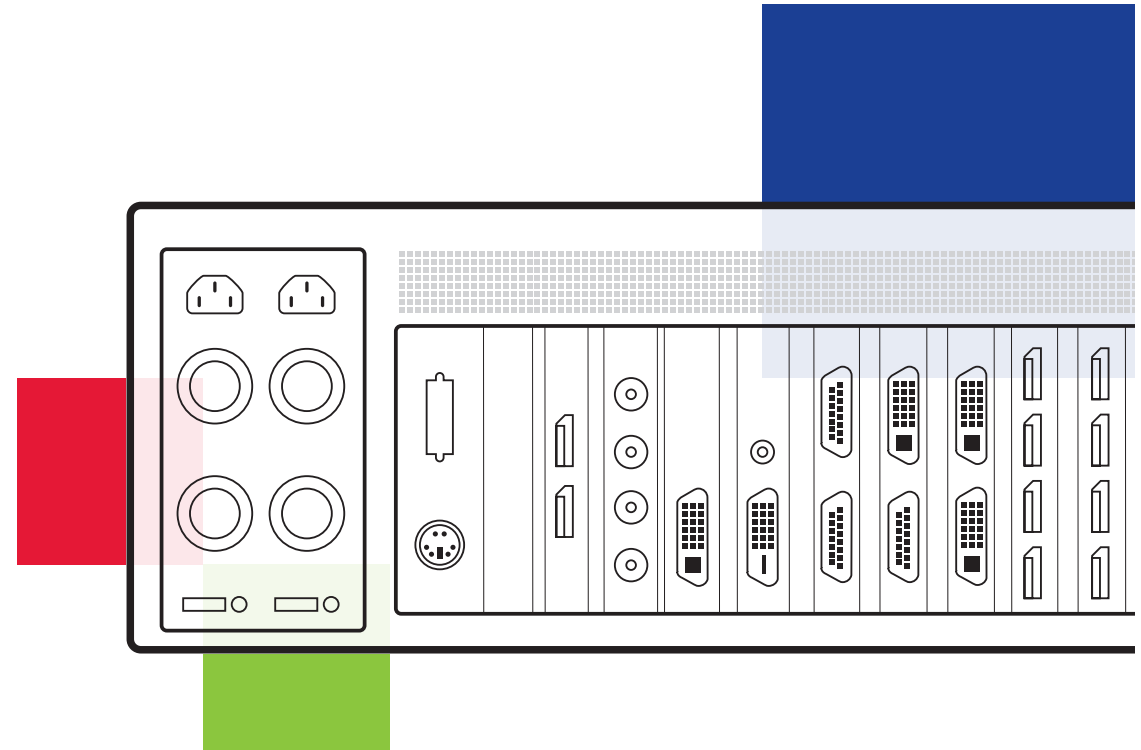


Electronic Modular Solutions Limited

Kendal House
20 Blaby Road
Leicestershire
LE18 4UN
United Kingdom
Tel: +44 (0) 116 2775730
Email: sales@ems-imaging.com
www.ems-imaging.com

Wall Controller Quick Start Guide

Xtreme-IPC - VSN900 and VSN1100 Series Controllers



Product	VSN 900 / 1100 series Quick Start Guide
Classification	Released
Version Number	1.0.2

Thank you for purchasing the EMS VSN 900 / 1100 series wall controller. The aim of this document is to quickly guide you through the process of initial setup. For detailed instructions consult the system User Guide which can be found on the Recovery Media.

WALL CONTROLLER QUICK START GUIDE

+ STEP 1 CONTENTS

CONTENTS - MAIN SYSTEM

- VSN Main chassis
- Mouse/keyboard
- Recovery Media
- Cables/Adapters
- Accessories Pack
 - Chassis Key
 - MAC Address labels

CONTENTS - EXPANSION UNIT

- VSN Expansion chassis
- ExCable/HLink card
- Accessories Pack
 - Chassis Key
 - HLink-G3 Card
 - SLink-G3 Card
 - Ex-Cable-G3

Note: VSN Expansion units may have been purchased as part of a large system or ordered separately.

Each EMS system is custom built and therefore the number and type of input and output cards will differ from system to system.

Contained with this Quick Start Guide are PCIe card product leaflets which give details on how the cards are installed and any accessories which may accompany them.



Items are heavy, lifting precautions should be taken.



EU – Class A Declaration of Conformity

EMS Ltd declares that this VSN Wall Controller complies with the essential requirements and other relevant provisions of Directives 2004/108/EC, 2006/95/EC and 2011/65/EU.

A copy of our Declaration of Conformity is available on request.

Electronic Modular Solutions Limited

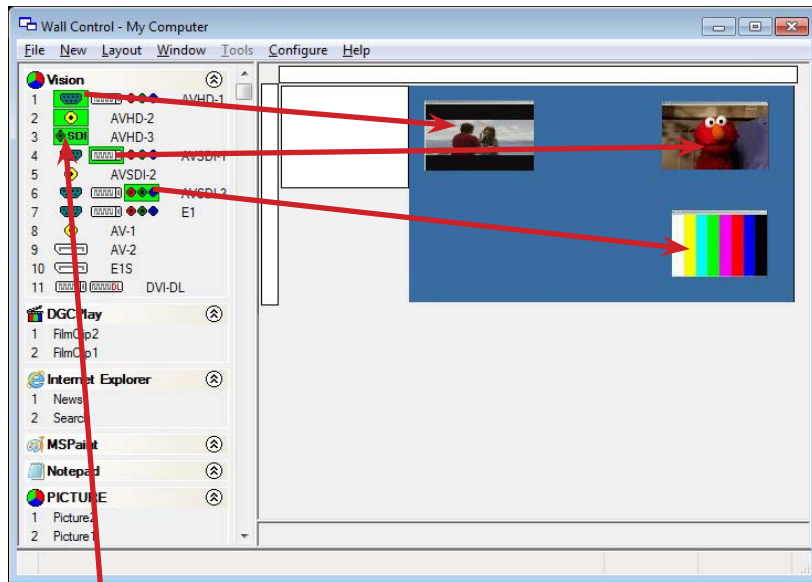
Kendal House
20 Blaby Road
Leicestershire, LE18 4SB
United Kingdom
Tel: +44 (0) 116 2775730
Email: sales@ems-imaging.com
www.ems-imaging.com

A full list of product compliance certifications can be found in the product User Guide on the Recovery Media supplied with the system.

© EMS Ltd., England, 2016

EMS Limited claims copyright on this documentation. No part of this documentation may be reproduced, released, disclosed, stored in any electronic format, or used in whole or in part for any purpose other than stated herein without the express permission of EMS Limited.

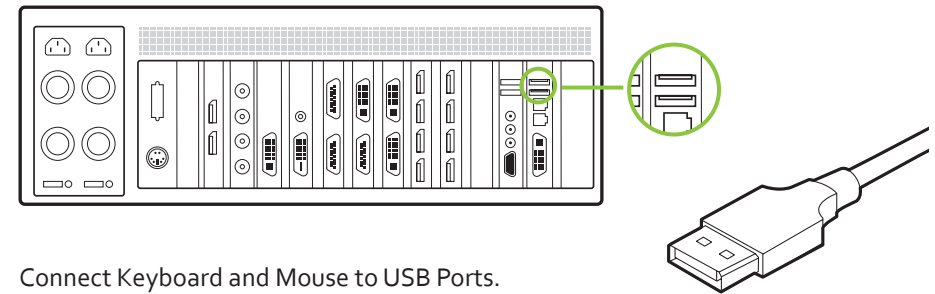
Whilst every effort is made to ensure that the information contained in this Quick Start Guide is correct, EMS Limited make no representations or warranties with respect to the contents thereof, and do not accept liability for any errors or omissions. EMS reserves the right to change specification without prior notice and cannot assume responsibility for the use made of the information supplied. All registered trademarks used within this documentation are acknowledged by EMS Limited.



To open a video window click and drag an active capture into the VigiControl application.

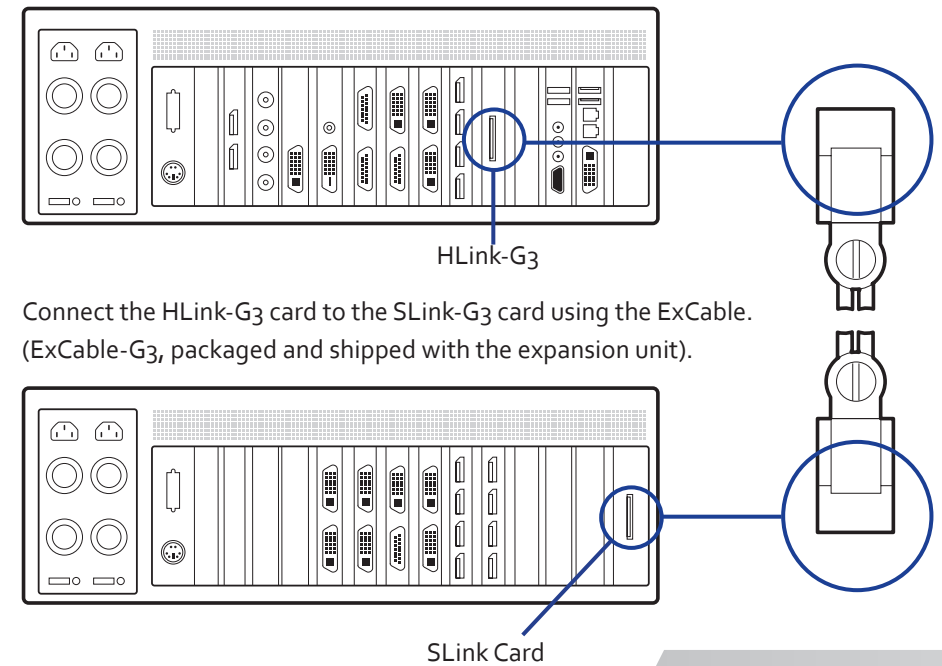
Use the Help Menu for a comprehensive guide to the features of the VigiControl application.

+ STEP 2 KEYBOARD AND MOUSE



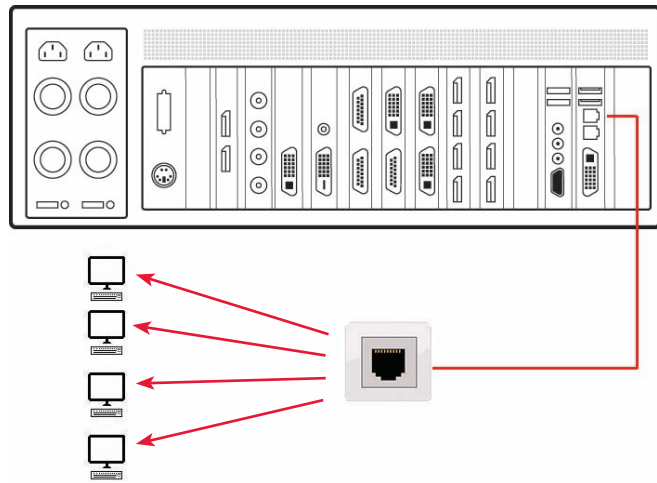
Connect Keyboard and Mouse to USB Ports.

+ STEP 3 CONNECT EXPANSION UNIT (OPTIONAL)

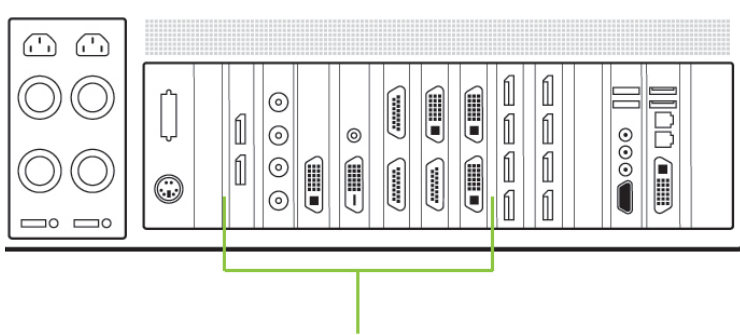


Connect the HLink-G3 card to the SLink-G3 card using the ExCable. (ExCable-G3, packaged and shipped with the expansion unit).

+ STEP 4 CONNECT TO A NETWORK (OPTIONAL)



+ STEP 5 CONNECTING INPUT SOURCES



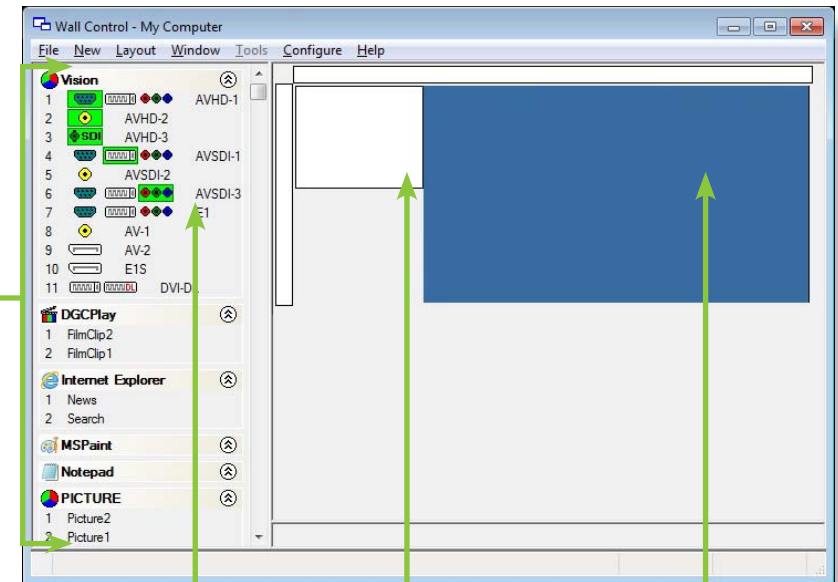
Each EMS system is custom built and therefore the number and type of input will differ from system to system.

Contained with this Quick Start Guide are PCIe card product leaflets which give details on how the cards are connected and any supplied cables and adapters.

+ STEP 11 WALL CONTROL (OPTIONAL)




Start | All Programs | VigiControl | VigiControl-My Computer



1 2 3 4

1	The icons displayed in the application toolbar identify which type of source is available to each input
2	Icons highlighted green indicate an active capture for that particular input.
3	Representation of the control screen.
4	Representation of the Video Wall desktop.

+ STEP 9 ACTIVATE WINDOWS 7


 Start | Computer | Properties | Activate Windows now.

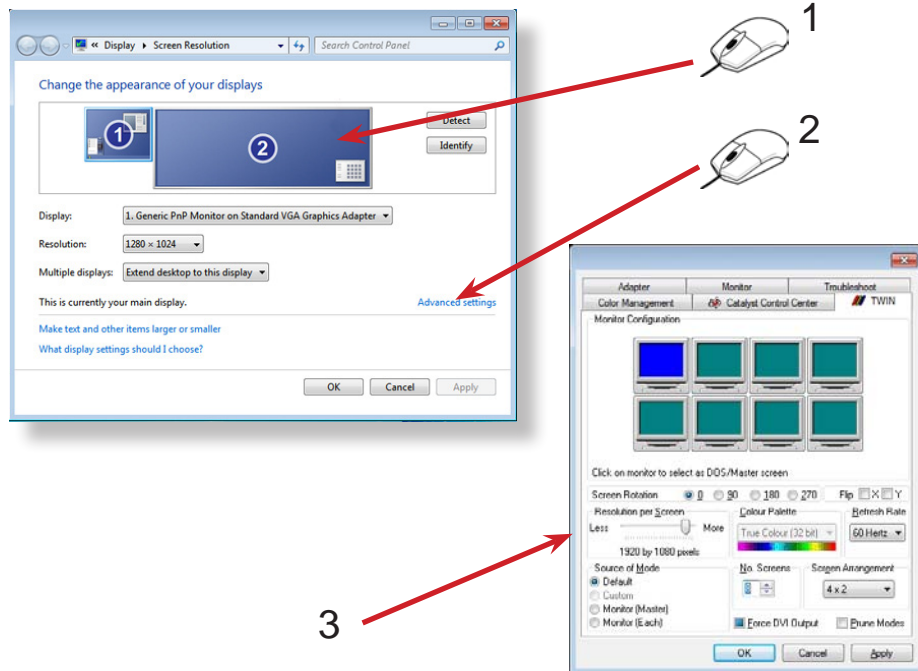
Select the appropriate method available.

To view the product key, open the front door and the product key label is displayed on the front panel of the system.

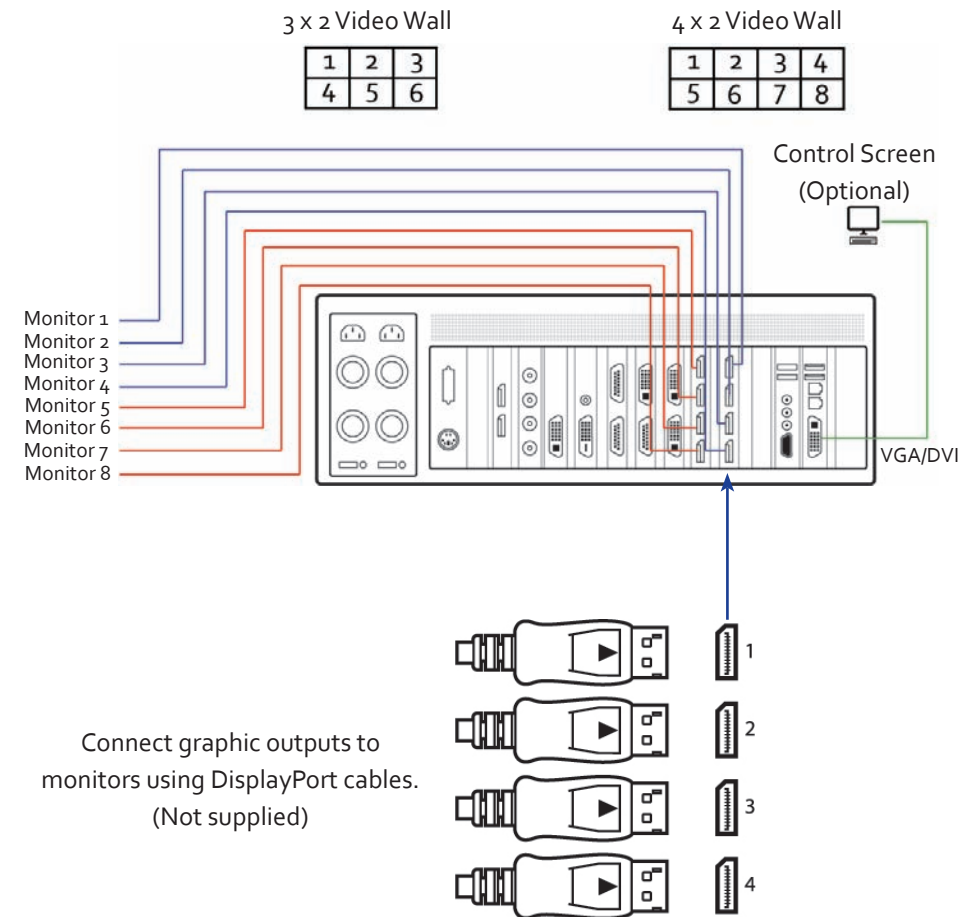
+ STEP 10 DISPLAY SETUP

All EMS wall controllers have pre-configured settings for the wall layout and screen resolution. Change settings using the TWIN tab:

 Start | Control Panel | Appearance and Personalization | Adjust screen resolution.

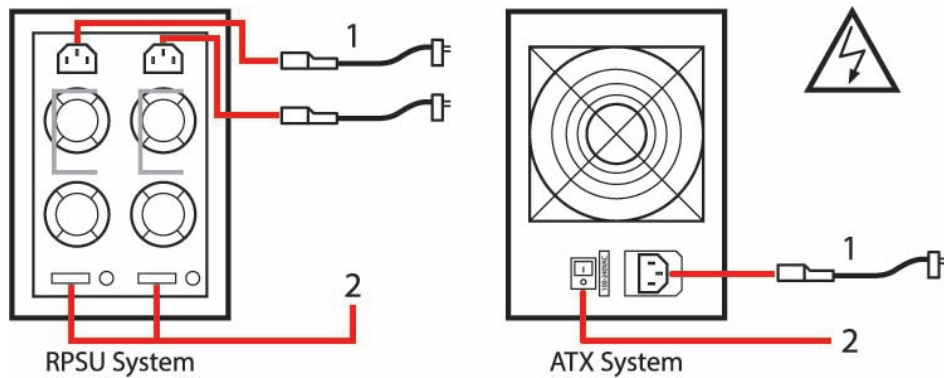


+ STEP 6 CONNECT CONTROL SCREEN (OPTIONAL)/ MONITORS



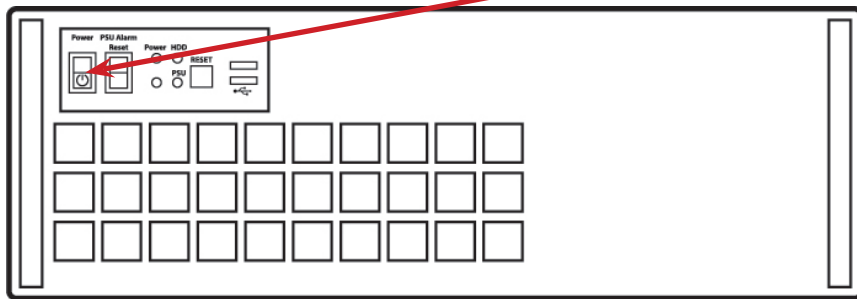
Many of our wall controllers are configured to use a control screen prior to leaving the factory, if required, connect the control screen to the SBC as shown above. If a control screen is not required, the BIOS settings will require changing, see User Guide for detailed instructions.

+ STEP 7 POWERING UP THE SYSTEM



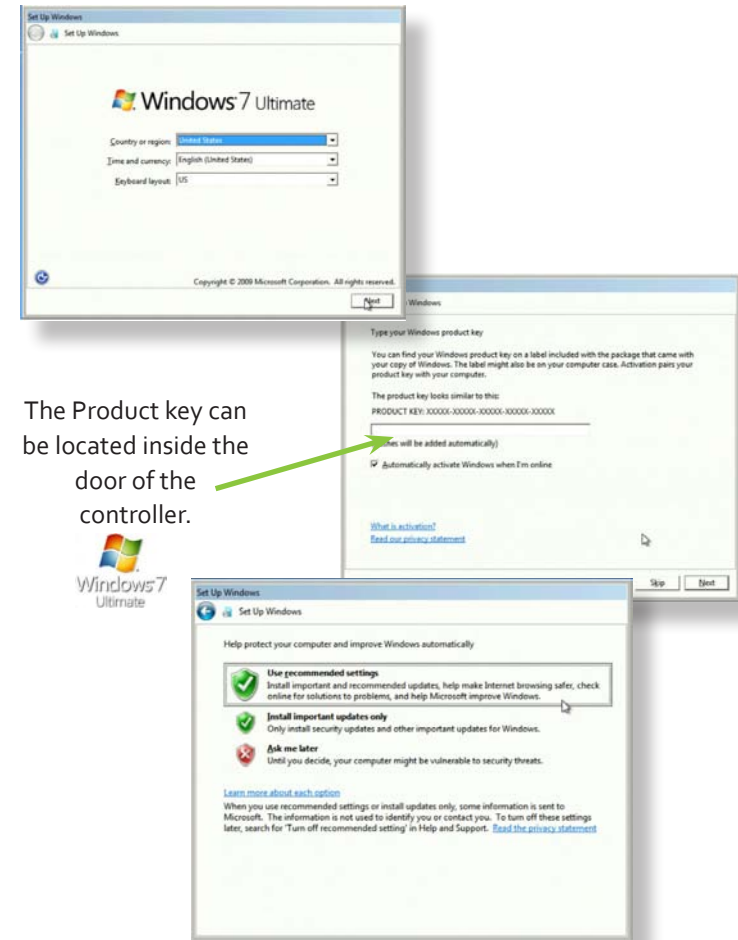
- 1 Connect power cables then plug into a mains supply.
- 2 Switch on the power supply units.

3 Switch on the system.



If you have an VSN Expansion Chassis connected to the main unit then the power supply units on the expansion chassis should be switched on prior the main unit. There is no requirement to "switch on the system" (3) on an expansion chassis.

+ STEP 8 WINDOWS 7 SETUP



The Product key can be located inside the door of the controller.

Computer Name:

It is recommended that only Internet-standard characters are used in the computer name. The standard characters are the numbers 0 through to 9, upper and lower-case letters from A through to Z and the hyphen character. Computer names can't consist entirely of numbers nor can they contain spaces. The name also can't contain special characters such as: < > ; : " ? * + = \ | ? , .